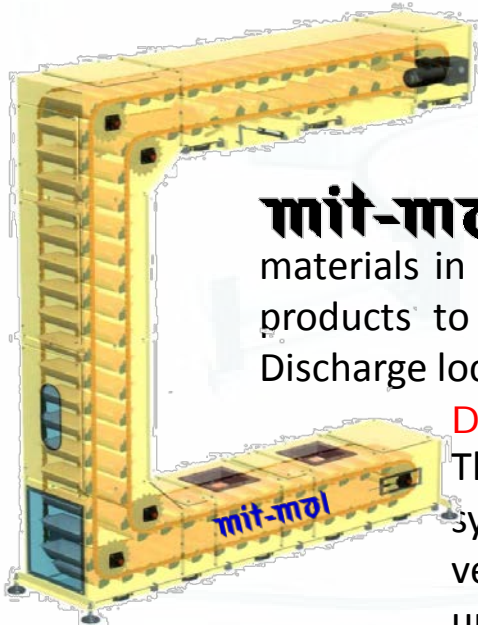


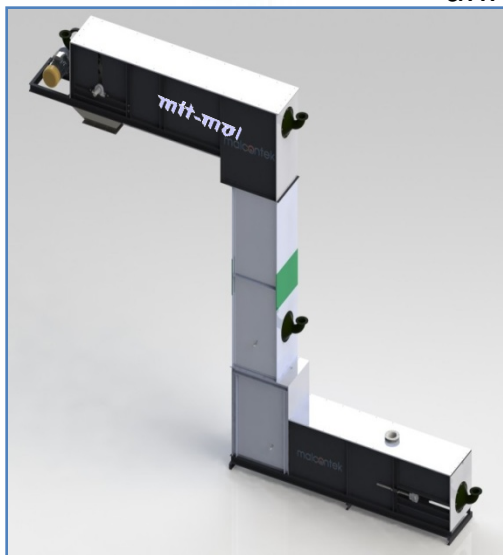
### BUCKET CONVEYORS



**mit-mol** Bucket Conveyors are designed to gently transport a variety of free flow Bulk materials in Dry , Semi- Dry Moist conditions. These units are extremely adaptable to deliver products to Multi Locations From Single or Multi Source of Supply through its variety of Discharge locations stations

#### Description

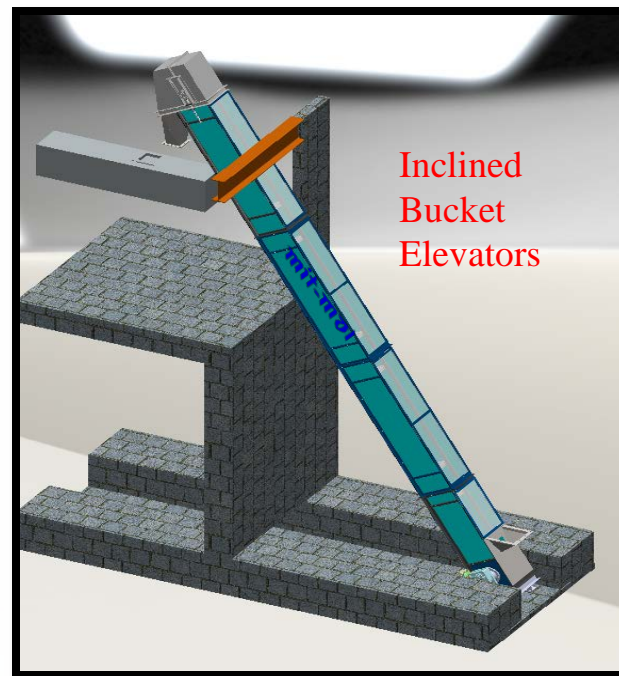
The Bucket conveyor is an engineered and ruggedly manufactured conveying system for continuous and quiet operation. The overlapping buckets make it versatile in material handling, simple to operate, saving floor space and unnecessary pit requirements.



- Available in a wide range of sizes, configurations and capacities.
- Built in both Open and Enclosed casing frame designs.
- Available in Carbon steel or stainless steel versions.
- Buckets available in different shapes depending upon product requirements.
- Buckets available in Stainless Steel , Mild Steel and plastic depending on the need.
- Multi-drop facility available to maximize throughput and versatility.

#### Low Maintenance

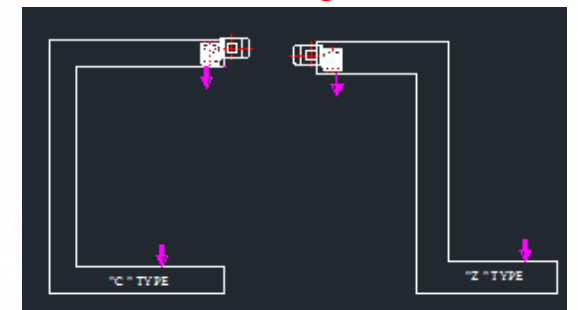
Only high quality components needing little maintenance are used throughout. All models have easy to remove inspection covers and a conveniently located inspection window. Drawers are provided underneath all horizontal sections to facilitate easy cleaning and the inside walls are smooth, thereby preventing dust buildup. All bearings are mounted outside for easy access. The buckets have a quick release mechanism to facilitate fast installation or removal of buckets. All Bucket Elevators are quipped with an chain tensioning device and built-in overload protection.



#### Applications

Candy, Cereals, Chemicals, Coffee, Confectionery, Detergents, Dry Foods, Shelled Nuts, Potato Chips, Hardware, Insecticides, Metal Scraps, Powers, Pasta/Macaroni, Chips, Plastic, Granules, Flour, Pharmaceutical, Rice, Seed, Parts, Snacks, Toys, Vegetables, Fertilizer, Soaps, Pet Food and Other Dry or Semi-Dry Products,

#### Available Configurations



C-Elevator

Z-Elevator

